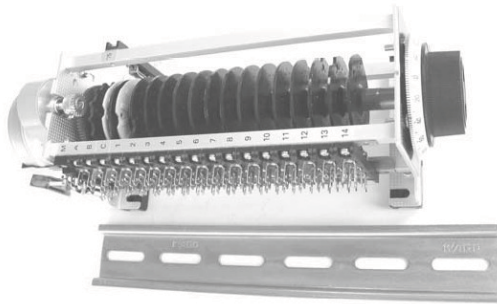


Serie MSB



- Programmable programm channel 5 ... 20
- Number of steps 5 ... 24
- Micro switch standard KS 25 B4
- Breaking capacity 4 A 220 VAC / 1 A 60 VDC
- Fast mounting
- Special types on request

Technical data

Precision micro switch

Micro switch

Contactmaterial

Breaking capacity

Transfer resistance

KS 25 B4

Ag 999 (silver)

4 A 250 VAC / 1 A 60 VDC

< 25 mΩ

Micro switch

Contactmaterial

Breaking capacity

Transfer resistance

KS 26 B4

Au 4...6 μm (gold)

4 A 250 VAC / 1 A 60 VDC

< 10 mΩ

Common contact

Normally open contact

Break contact

Double soldering and plug connection

COM (1)

NC (2)

NO (2)

2 x 2.8 x 0.5mm

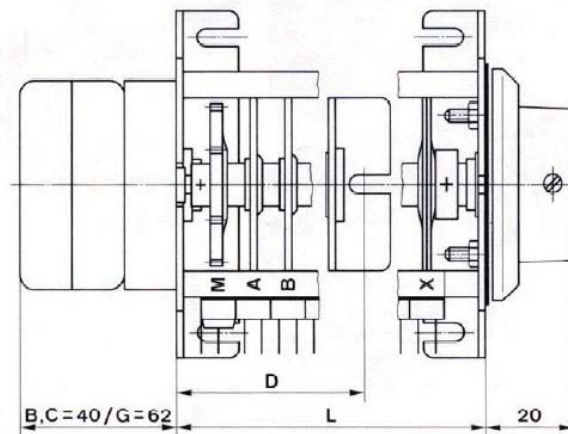
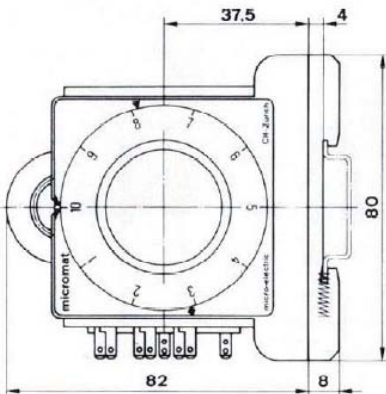
Program panel with clips

NP 4160 / NP 4172

Knob scale

Preselection of a certain position

Outline drawing



Technische Änderungen vorbehalten / Subject to change without prior notice

Serie MSB

Electrical connection (Type SA)

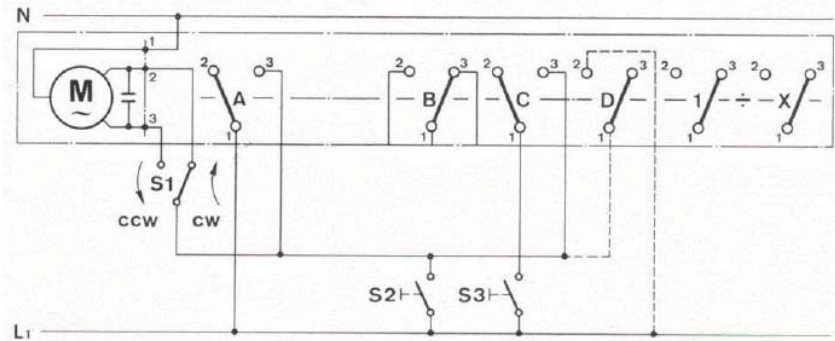
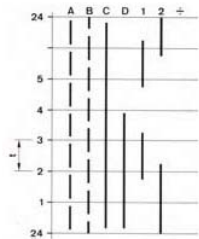
Funktion **SA**

min. 60 ms. max. 180 ms.

S1 = Wahlschalter
S2 = Start
S3 = Nullstellung

K = Hilfsrelais

Programm



Electrical connection (Type SE)

Funktion **SE**

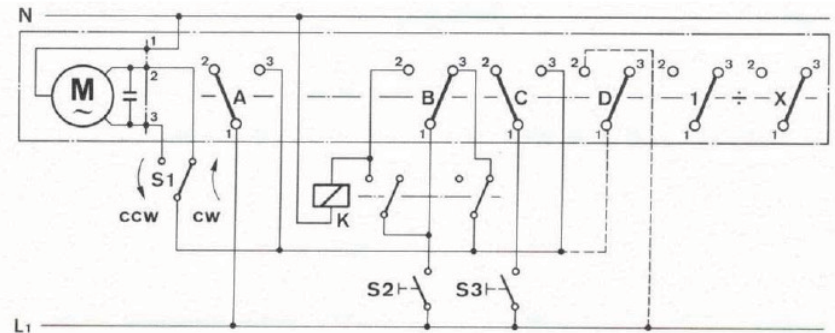
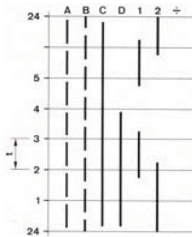
min. 60 ms. ...
max.

Dauerimpulse **SE**

S1 = Wahlschalter
S2 = Start
S3 = Nullstellung

K = Hilfsrelais

Programm



Schaltkanäle (festes programm)
Schrittscheibe
Schrittverriegelung
Nullstellung
Schrittbegrenzung

A = NF 4100
B = NF 4100
C = NF 4101
D = NK 4201

Serie MSB

Order key

	MSB41	09	S1	C1	1
Switches left					
Dimension / Size (mm) / Number of switches:					
09					
9 -->Dimension:					
95 mm -->Size (L)					
5 -->Number of steps					
5 -->Indication (division)					
4 -->Switching channels					
5 -->Program channels					
9 Channels --> Total					
15					
15 -->Dimension:					
143 mm -->Size (L)					
10 -->Number of steps					
10 -->Indication (division)					
4 -->Switching channels					
11 -->Program channels					
15 Channels --> Total					
18					
18 -->Dimension:					
167 mm -->Size (L)					
12 -->Number of steps					
12 -->Indication (division)					
4 -->Switching channels					
14 -->Program channels					
18 Channels --> Total					
21					
21 -->Dimension:					
191 mm -->Size (L)					
15 -->Number of steps					
15 -->Indication (division)					
4 -->Switching channels					
17 -->Program channels					
21 Channels --> Total					
24.1					
24.1 -->Dimension:					
223 mm -->Size (L)					
118 mm -->Size (D)					
18 -->Number of steps					
20 -->Indication (division)					
4 -->Switching channels					
20 -->Program channels					
24 Channels --> Total					
24.2					
24.2 -->Dimension:					
223 mm -->Size (L)					
118 mm -->Size (D)					
20 -->Number of steps					
20 -->Indication (division)					
4 -->Switching channels					
20 -->Program channels					
24 Channels --> Total					
30					
30 -->Dimension:					
271 mm -->Size (L)					
142 mm -->Size (D)					
24 -->Number of steps					
24 -->Indication (division)					
4 -->Switching channels					
26 -->Program channels					
30 Channels --> Total					

Technische Änderungen vorbehalten / Subject to change without prior notice

Serie MSB

Cycle times (s):

S1 = 3s	M1 = 2min.	H1 = 2h
S2 = 3,6s	M2 = 3min.	H2 = 3h
S3 = 4,5s	M3 = 3,6min.	H3 = 3,6h
S4 = 6s	M4 = 4,5min.	H4 = 4,5h
S5 = 7,5s	M5 = 6min.	H5 = 6h
S6 = 10s	M6 = 7,5min.	H6 = 7,2h
S7 = 12s	M7 = 10min.	H7 = 10h
S8 = 15s	M8 = 12min.	H8 = 12h
S9 = 20s	M9 = 15min.	H9 = 24h
S10 = 30s	M10 = 20min.	
S11 = 36s	M11 = 30min.	
S12 = 45s	M12 = 36min.	
S13 = 60s	M13 = 45min.	
S14 = 90	M14 = 60min.	
	M15 = 90min.	

Synchronous motor: Power supply (AC / DC) Frequency 50Hz (60Hz) --> ?

	CW	CCW	
C1 = 24	/ 24V		AC
C2 = 48	/ 48...	50V	AC
C3 = 110	/ 110...	120V	AC
C4 = 220	/ 220...	240V	AC
G1 = 24	/ 24V	± 0.7	DC
G2 = 12	/ 12V	± 0.7	DC

Programming cam with clicks:

1	= NP4160
2	= NP4172

additionally per NF disk programs