

ESH125 SERIE



for machining, control panels, cranes

- ➔ Different output signals
- ➔ Helix cable
- ➔ with mounting magnet
- ➔ Protection class IP 60

Product description

The series ESH125 is perfect to control the 1 axis machines. On request we also could seal them. The hand wheel give per turn 100 pulses to the controller.

Application

This series is placed in front of all machines, cranes and different apparatus which has to control a single axis.

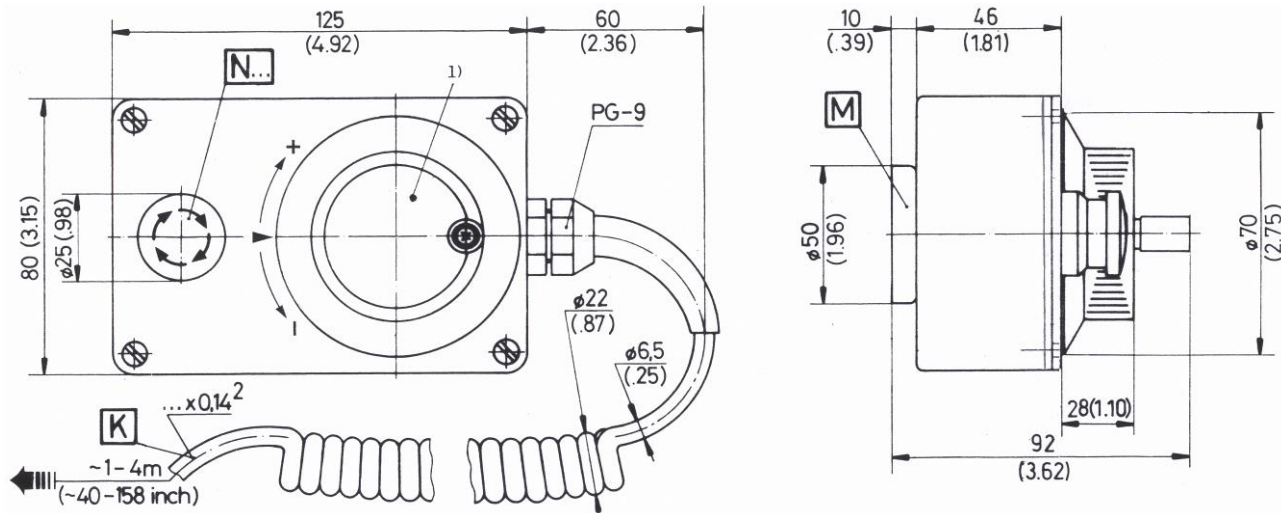
Technical specifications

Pulses	100
Channels	2 + 4
Power supply	5V DC
Output driver	Pull up / Line driver
Selector switches for axes	1...6
Switches for resolution	1...3
Emergency stop	Single or redundant
Helix cable	12x0.14mm (PUR)
Protection	IP 60
Magnetic clamp	Option

ESH125 SERIE



Dimension in mm



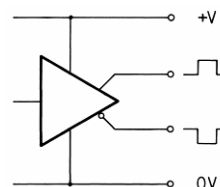
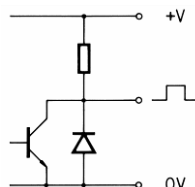
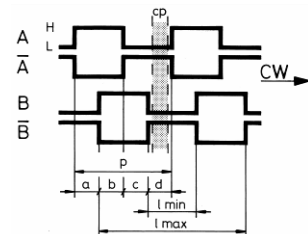
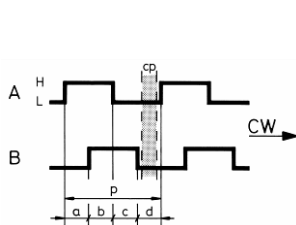
Output Signal (Handwheel)

Output channel
M70
cp = Click point

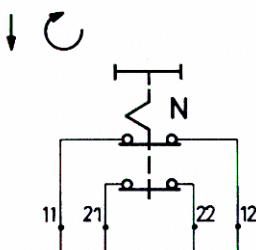
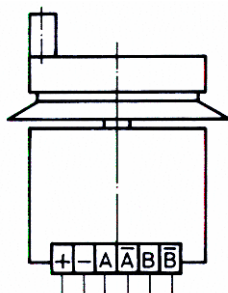
M74
p = Periode

/ Output driver
Pull up (2 KΩ intern)

Line driver (RS 422)



Electrical schema



Signal	Wire Colour
+Vcc	Red
GND	Black
A	White
B	Brown
A'	Green
B'	Yellow
N71	Grey
N71	Pink
N72	Blue
N72	Purple

ESH125 SERIE



Order Code

		945	X.	0	0	X	0	X
OUTPUT DRIVER								
0	A , B	Pull-up 5V DC ±5% / ESM70						
1	A , B , A' , B'	Line driver 5V DC ±5% / ESM74						
0								
EMERGENCY STOP N								
0	1 x OFF 1,5A 250V AC (71)	simplex						
1	2 x OFF 1,5A 250V AC (72)	redundant						
HELIX CABLE								
0	12 x 0.14mm ² (AWG26)							
MAGNETIC CLAMP								
0	none							
1	Ø 50mm							



Questions ?

Phone: +41 (0)44 843 40 20 or Mail: sales@micronor.ch