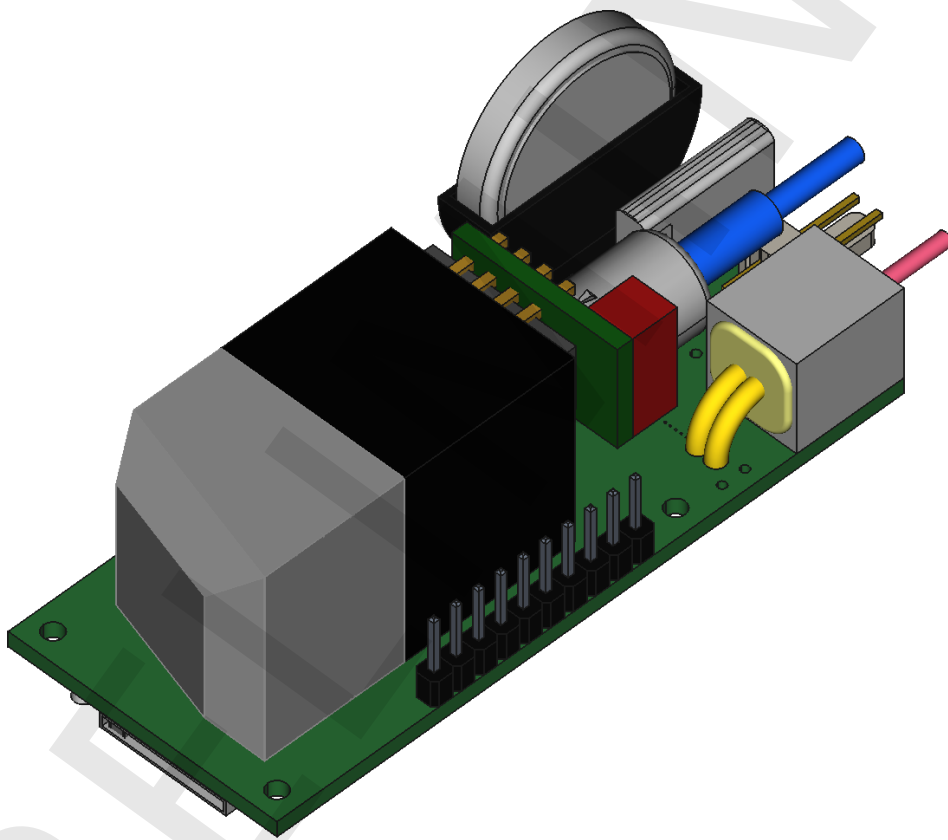


FIBER OPTIC TEMPERATURE MEASUREMENT SYSTEM

FOTEMP MINI 3



FEATURES

- > Easy OEM integration
- > Small footprint
- > Measuring range - 200 °C to + 300 °C
- > Standard deviation 0.2 K
- > TTL, RS232, RS485, USB interface
- > Temperature logging
- > USB powering possible

APPLICATIONS

- > EMI, RFI and microwave environments
- > High voltage environments
- > Process monitoring
- > Medical applications (MRT)

FIBER OPTIC TEMPERATURE
MEASUREMENT SYSTEM

FOTEMP MINI 3

DESCRIPTION

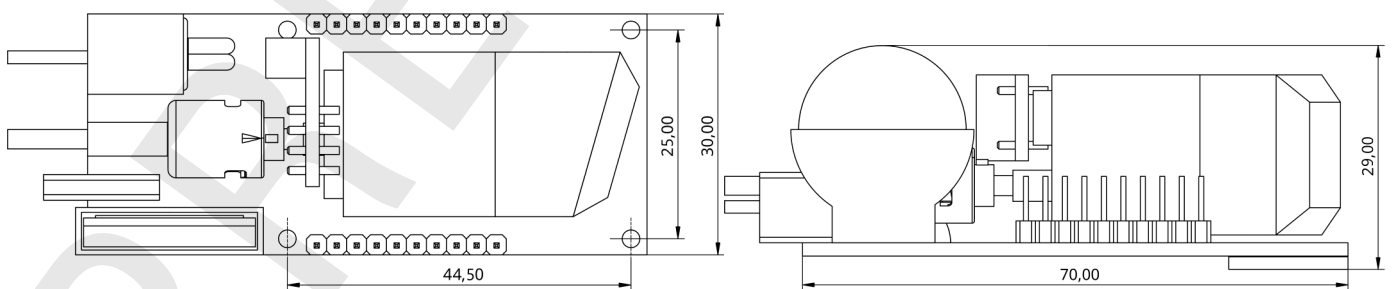
The FOTEMP MINI 3 with its minimalist design is specially intended for use in customer projects. With fiber optic sensors it is ideal for measuring temperatures in microwave, high frequency, high voltage and magnetic field environments or aggressive environments where the use of metallic sensors (RTC, TC, capillary, etc.) is not possible

The FOTEMP MINI 3 contains the light source, the optical analyser and the associated electronics with several interfaces such as RS232, RS485 or USB. These can be used with ASCII or Modbus for real-time data acquisition with or without our FOTEMP ASSISTANT 2 software. The data can be logged both continuously and timed on the SD card. The device can be operated via an external power supply or directly via USB, which means that only one connection to the device is required.

Depending on the measurement environment, several sensor designs are available with different types of tubing, sensor tip and also customized sensors can be offered.

We are always eager to adjust our offer to your special needs. In case of any further questions about individual measurement solutions, lengths of sensors or connector types, please contact us.

DIMENSIONS



*1 Mean value. This value depends on the used sensor and its environmental temperature.

*2 Statement only possible with a calibrated analysis unit.

ORDERING CODE

(For Standard USB-Powered Model, P0)

FOTEMP-MIN3-P0-x where x=Calibration Option
A1= -20C to +150C, A2= -40C to +200C
B= -40C to +300C, C=-200C to +300C

TECHNICAL SPECIFICATIONS

| | |
|-----------------------|---|
| Channel | 1 |
| Measurement Range | -200 °C to 300 °C, depends on Calibration Option |
| Measuring Time *1 | < 250 ms (4 Hz) |
| Accuracy *2 | 0.2 K for Original Factory Calibration, FOTEMP unit and original TS sensor 0.5K for One-Point Calibration with different TS sensor |
| Resolution | 0,1K |
| Data Logging | Continuous or timed logging on optional microSD |
| Protocols | ASCII, Modbus |
| Interfaces | TTL, RS232, RS485, USB |
| Power Supply | USB-Powered (Standard, P0) 9-24VDC/350 mA (Optional, |
| Operating Temperature | -20 °C to 60 °C |
| Storage Temperature | -20 °C to 70 °C |
| Dimension | PCB, 70 x 30 x 29 mm |
| Weight | 0,2 kg |
| Mounting Options | Mounting holes |
| Connector Type | ST |
| Probes | Compatible with all TS series fiber optic temperature probes |
| Warranty | 1 year |

Specifications subject to change without notice