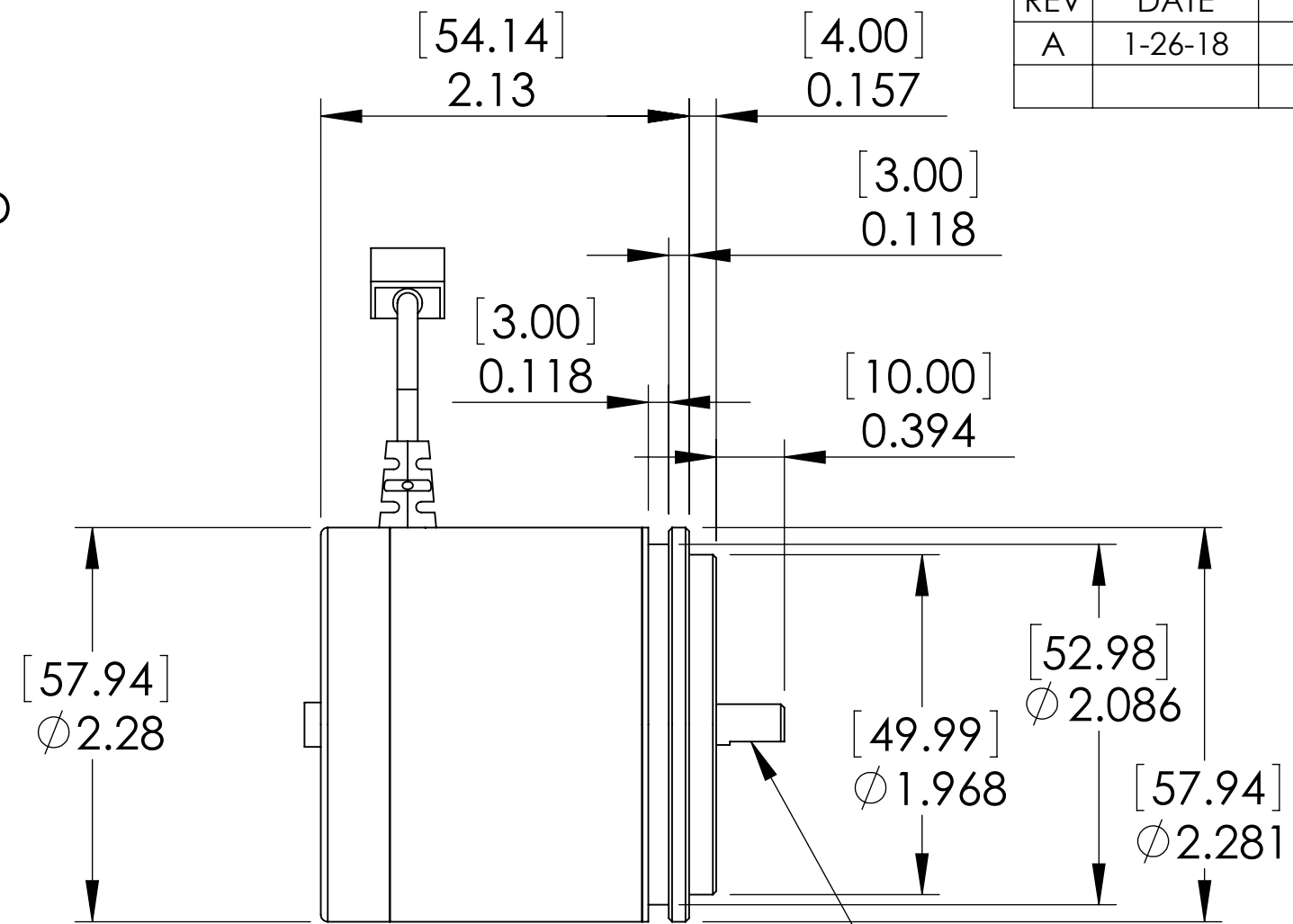
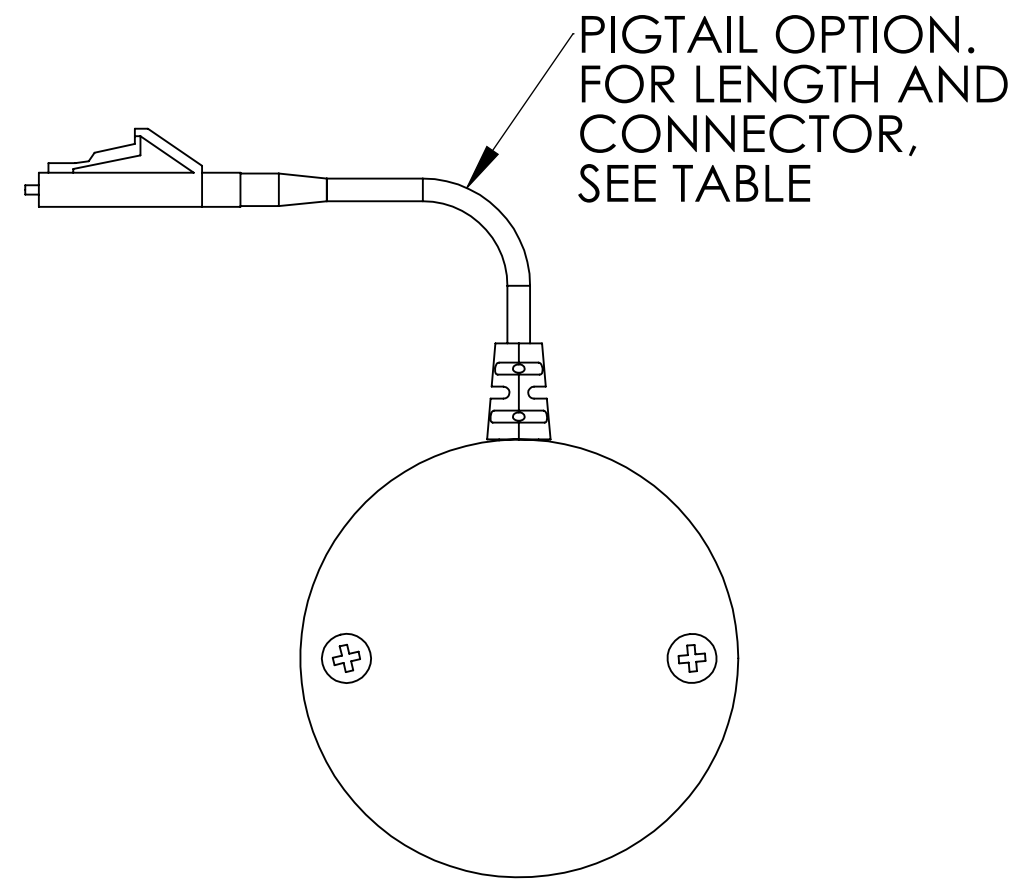
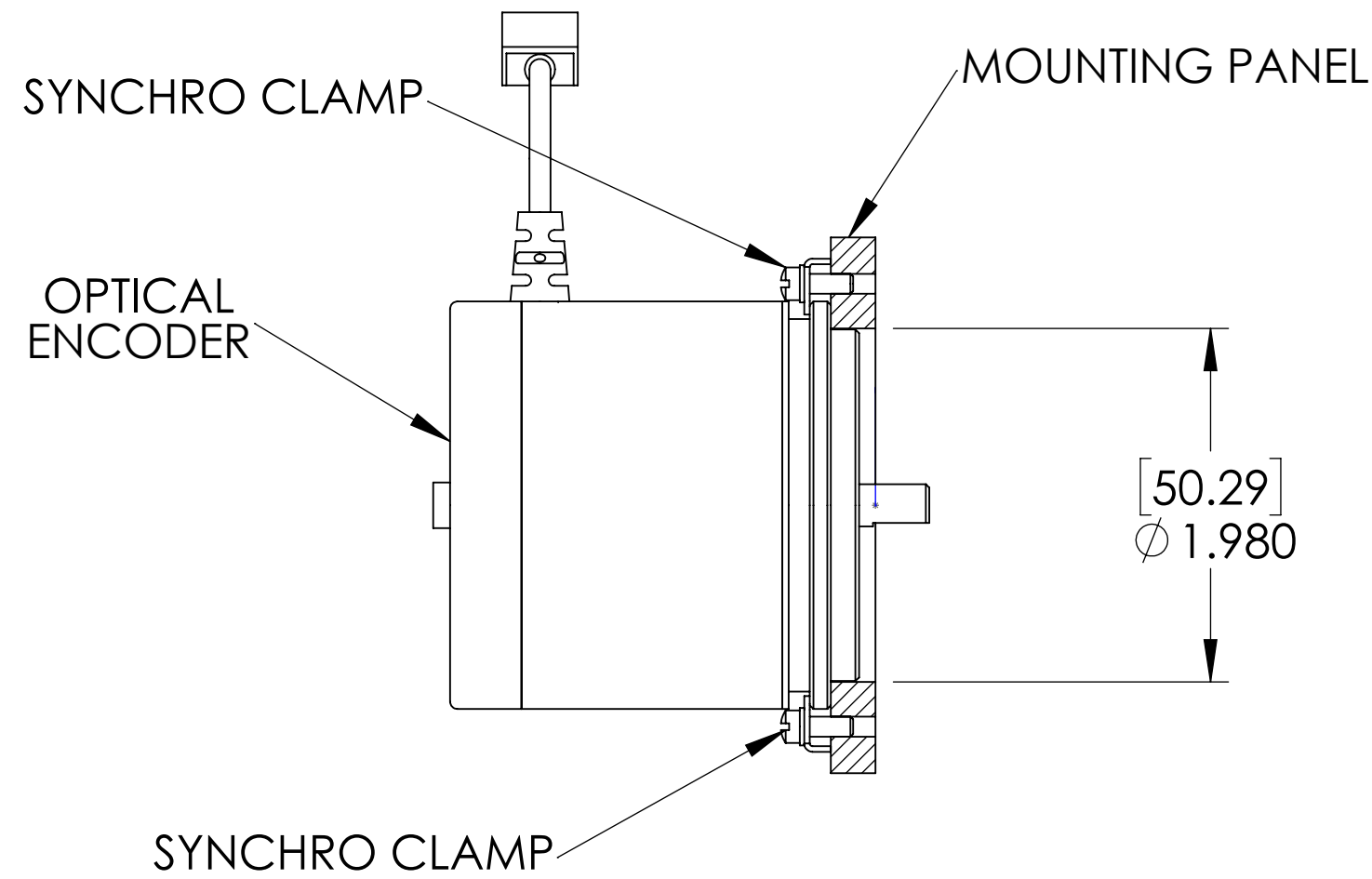
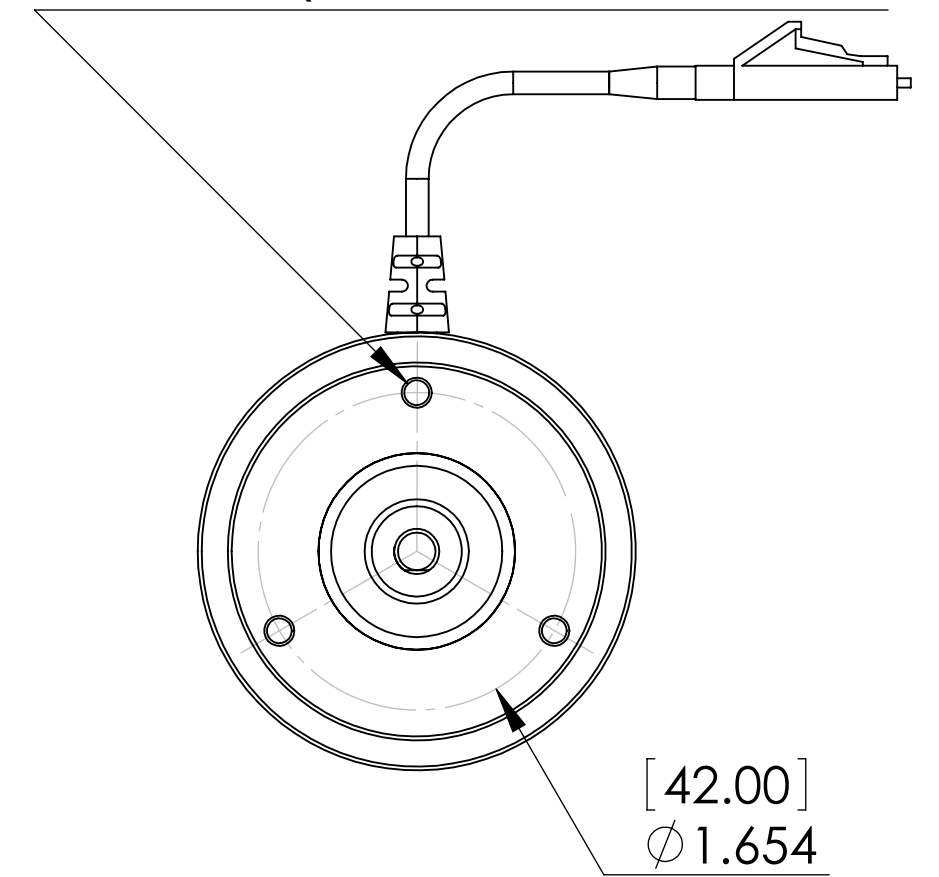


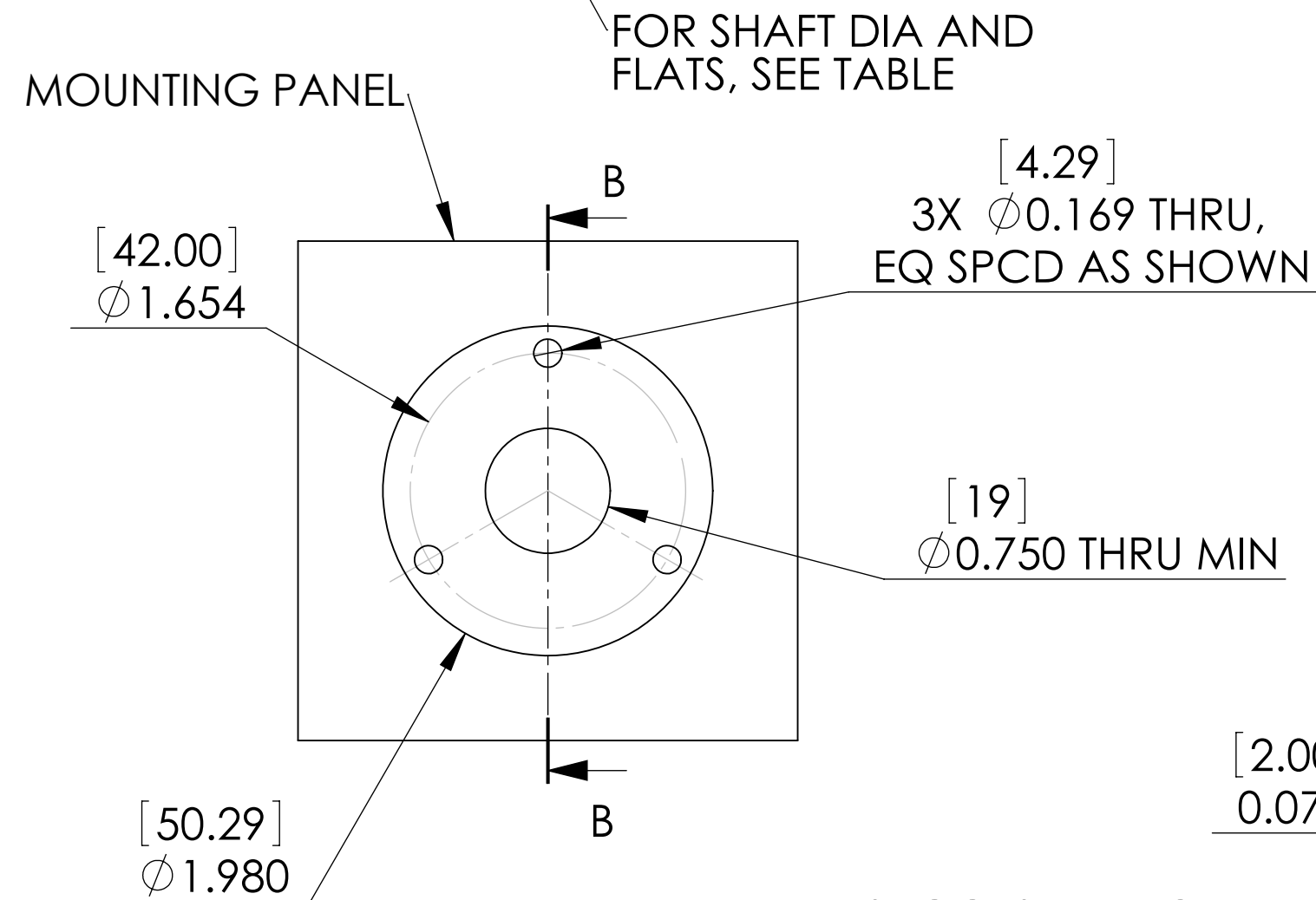
REVISIONS				
REV	DATE	ECN NO.	DRAWN BY	DESCRIPTION
A	1-26-18	N/A	RGB	MR322 TO MR342



3 x M4x0.7 - 6H ∇ 0.315 [8.00] MIN
EQ SPCD AS SHOWN



SUGGESTED MOUNTING PANEL
THRU-HOLE MOUNT WITH
SYNCHRO CLAMPS



SUGGESTED MOUNTING PANEL
COUNTER-BORED PANEL
WITH MOUNTING SCREWS

PART NUMBER ORDERING CODE

MR342 - D 06 C 1R5

RESOLUTION
B = 128
C = 256
D = 360

PIGTAIL LENGTH IN METERS
(R = DECIMAL POINT)
1R5 = 1.5 METER

SHAFT SIZE IN MILLIMETERS
6 = 6MM SHAFT
(ϕ 0.2358 \pm .0002 [5.989 \pm 0.010]
WITH 0.216 [5.50 FLAT])

OTHER SHAFT OPTIONS
ARE AVAILABLE

CONNECTOR TYPE
C = DUPLEX LC

PROPRIETARY AND CONFIDENTIAL
THE INFORMATION CONTAINED IN THIS DRAWING IS
THE SOLE PROPERTY OF MICRONOR INC. ANY
REPRODUCTION IN PART OR AS A WHOLE WITHOUT
THE WRITTEN PERMISSION OF MICRONOR INC. IS
PROHIBITED.

1. ALWAYS USE FLEXIBLE COUPLING WHEN MOUNTING SHAFT TO EXTERNAL EQUIPMENT.
2. WARNING: DO NOT DROP UNIT. DROPPING OR OTHER SEVERE SHOCK IMPACTS MAY DAMAGE UNIT.
3. WARNING: KEEP CONNECTOR COVERS IN PLACE DURING STORAGE, TO PROTECT FIBER OPTIC INTERFACES.

NOTES: UNLESS OTHERWISE SPECIFIED

UNLESS OTHERWISE SPECIFIED:
DIMENSIONS ARE IN INCHES

TOLERANCES:
TWO DECIMAL PLACE: \pm .01
THREE DECIMAL PLACE: \pm .004
FOUR DECIMAL PLACE: \pm .0010
ANGULAR: \pm .5°

MATERIAL:
SEE NOTES
FINISH:
SEE NOTES

DO NOT SCALE DRAWING

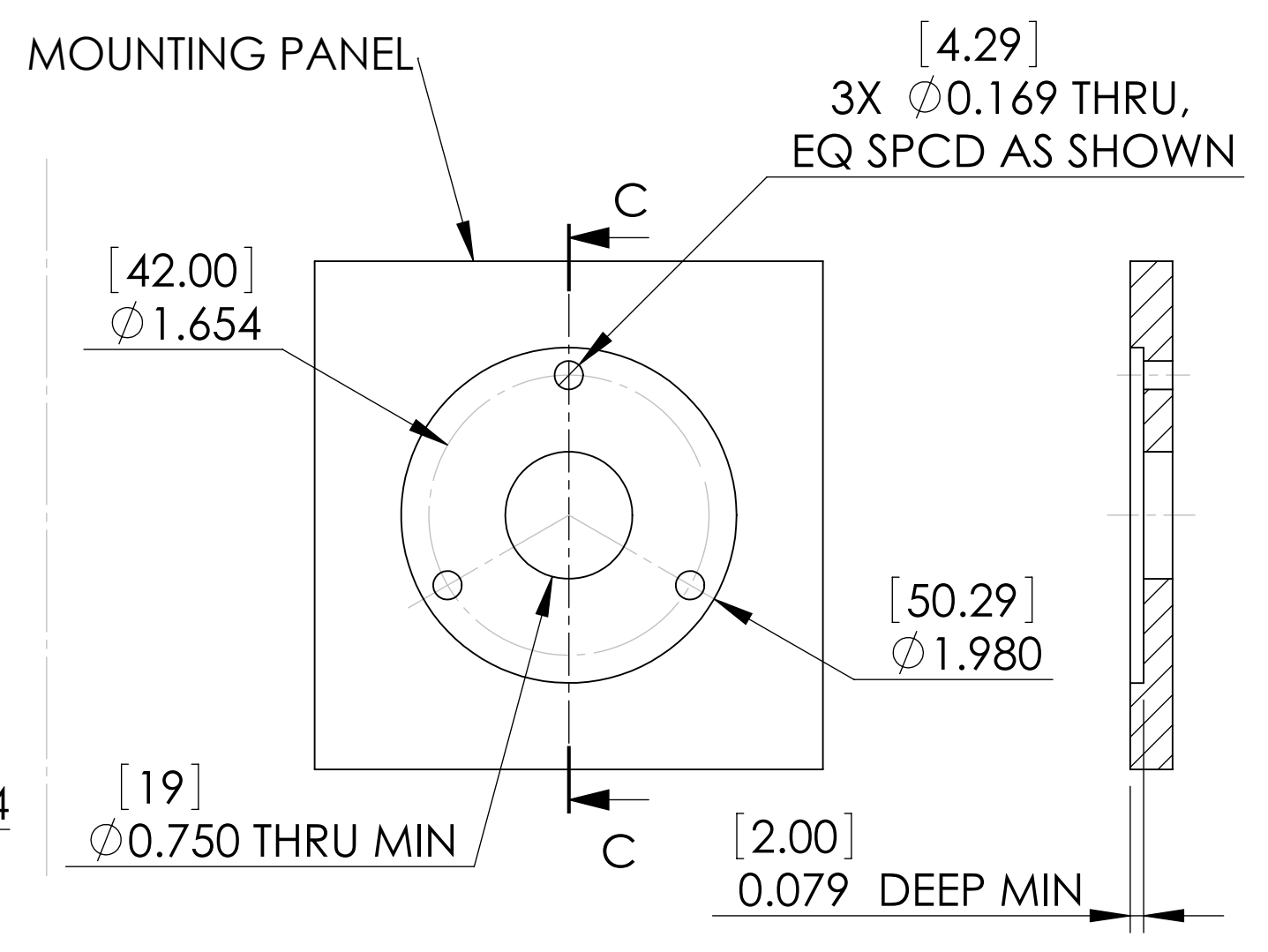
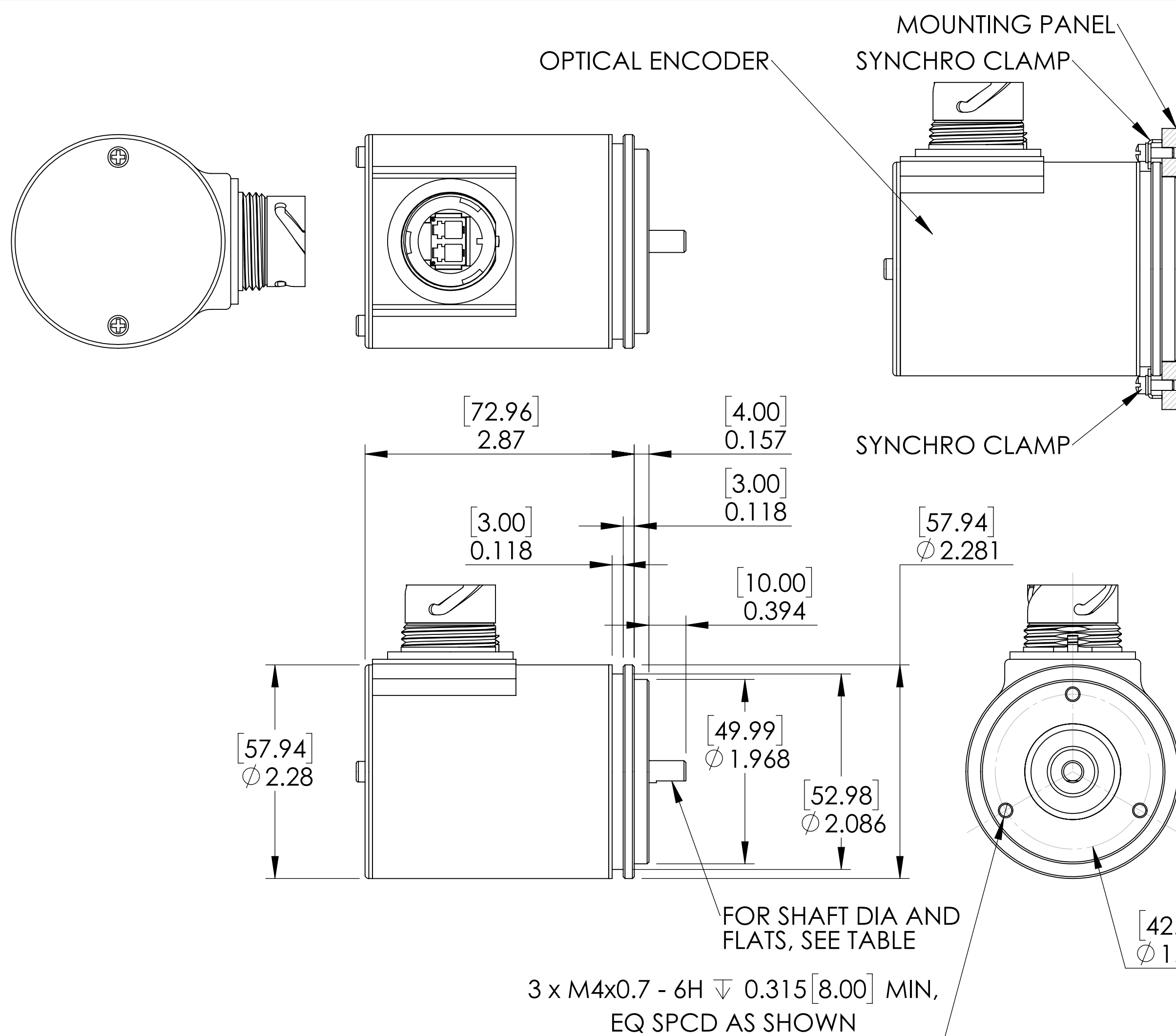
micronor FIBER OPTIC KINETIC SENSORS
WWW.MICRONOR.COM
805 389 6600

TITLE:
MR342 ROTARY INCREMENTAL
ENCODER ENVELOPE
DUPLEX LC PIGTAIL

SIZE DWG. NO. **98-0340-53** **REV**
C **A**

SCALE: 1:1 **SHEET:** 1 OF 2

REVISIONS				
REV	DATE	ECN NO.	DRAWN BY	DESCRIPTION
A	1-26-18	N/A	RGB	MR322 TO MR342



PART NUMBER ORDERING CODE

MR342 - D 06 D00

RESOLUTION
B = 128
C = 256
D = 360

OPTICAL CONNECTOR
D00 = INDUSTRIAL IP-LC
DUPLX CONNECTOR


SHAFT SIZE IN MILLIMETERS
6 = 6MM SHAFT
(Ø 0.2358 ± .0002 [5.989 ± 0.010]
WITH 0.216 [5.50 FLAT])

OTHER SHAFT OPTIONS ARE AVAILABLE

3. WARNING: KEEP CONNECTOR COVERS IN PLACE DURING STORAGE, TO PROTECT FIBER OPTIC INTERFACES.
2. WARNING: DO NOT DROP UNIT. DROPPING OR OTHER SEVERE SHOCK IMPACTS MAY DAMAGE UNIT.
1. ALWAYS USE FLEXIBLE COUPLING WHEN MOUNTING SHAFT TO EXTERNAL EQUIPMENT.

NOTES: UNLESS OTHERWISE SPECIFIED

PROPRIETARY AND CONFIDENTIAL
THE INFORMATION CONTAINED IN THIS DRAWING IS THE SOLE PROPERTY OF MICRONOR INC. ANY REPRODUCTION IN PART OR AS A WHOLE WITHOUT THE WRITTEN PERMISSION OF MICRONOR INC. IS PROHIBITED.

UNLESS OTHERWISE SPECIFIED: DIMENSIONS ARE IN INCHES		 www.MICRONOR.COM 805 389 6600	
TOLERANCES: TWO DECIMAL PLACE: ±.01 THREE DECIMAL PLACE: ±.004 FOUR DECIMAL PLACE: ±.0010 ANGULAR: ±.5°		TITLE: MR342 ROTARY INCREMENTAL ENCODER ENVELOPE IP-LC RECEPTACLE	
MATERIAL: SEE NOTES		SIZE	DWG. NO. 98-0340-53
FINISH: SEE NOTES		SCALE: 1:1	REV A
DO NOT SCALE DRAWING		SHEET: 1 OF 2	SHEET: 2 OF 2