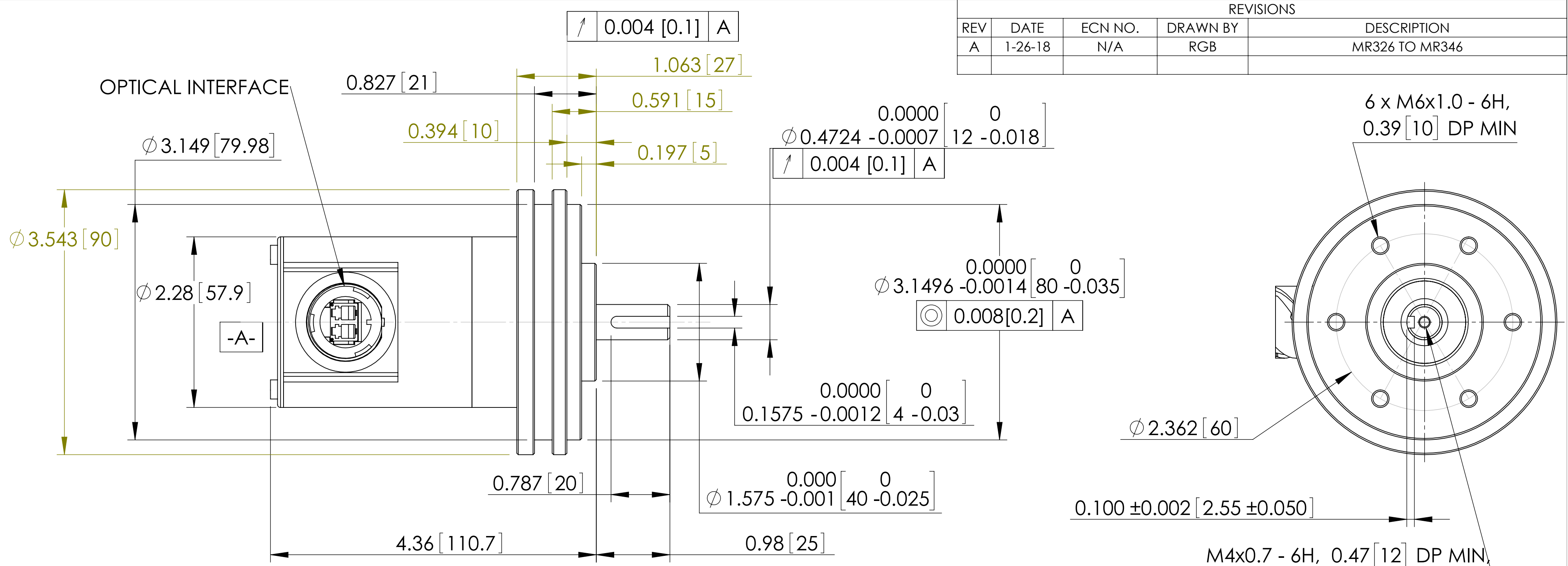


REVISIONS				
REV	DATE	ECN NO.	DRAWN BY	DESCRIPTION
A	1-26-18	N/A	RGB	MR326 TO MR346



**PART NUMBER ORDERING CODE**

MR346 - C 12 D00

**RESOLUTION (PPR)**

C = 256  
D = 360

**SHAFT SIZE IN MILLIMETERS**

12 = 12MM SHAFT

**OPTICAL CONNECTOR**

D00 = INDUSTRIAL IP-LC  
DUPLEX RECEPTACLE  
CONNECTOR

**TEMPERATURE RANGE**

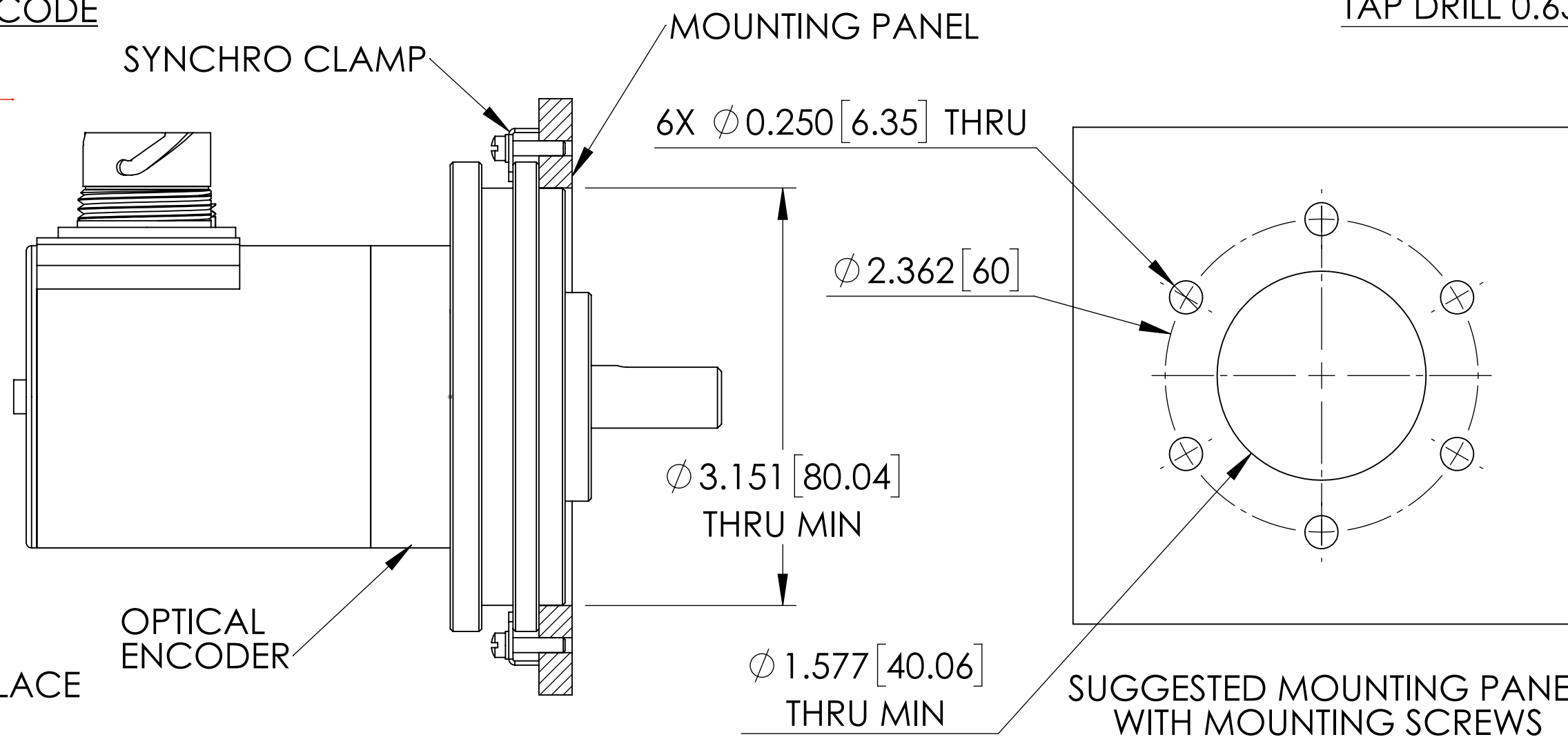
(BLANK) = STANDARD  
(-40°C TO +80°C)

3 WARNING: KEEP CONNECTOR COVERS IN PLACE DURING STORAGE, TO PROTECT FIBER OPTIC INTERFACES.

2 WARNING: DO NOT DROP UNIT. DROPPING OR OTHER SEVERE SHOCK IMPACTS MAY DAMAGE UNIT.

1 ALWAYS USE FLEXIBLE COUPLING WHEN MOUNTING SHAFT TO EXTERNAL EQUIPMENT.

NOTES: UNLESS OTHERWISE SPECIFIED




**SUGGESTED MOUNTING PANEL WITH SERVO CLAMPS**

**SUGGESTED MOUNTING PANEL WITH MOUNTING SCREWS**

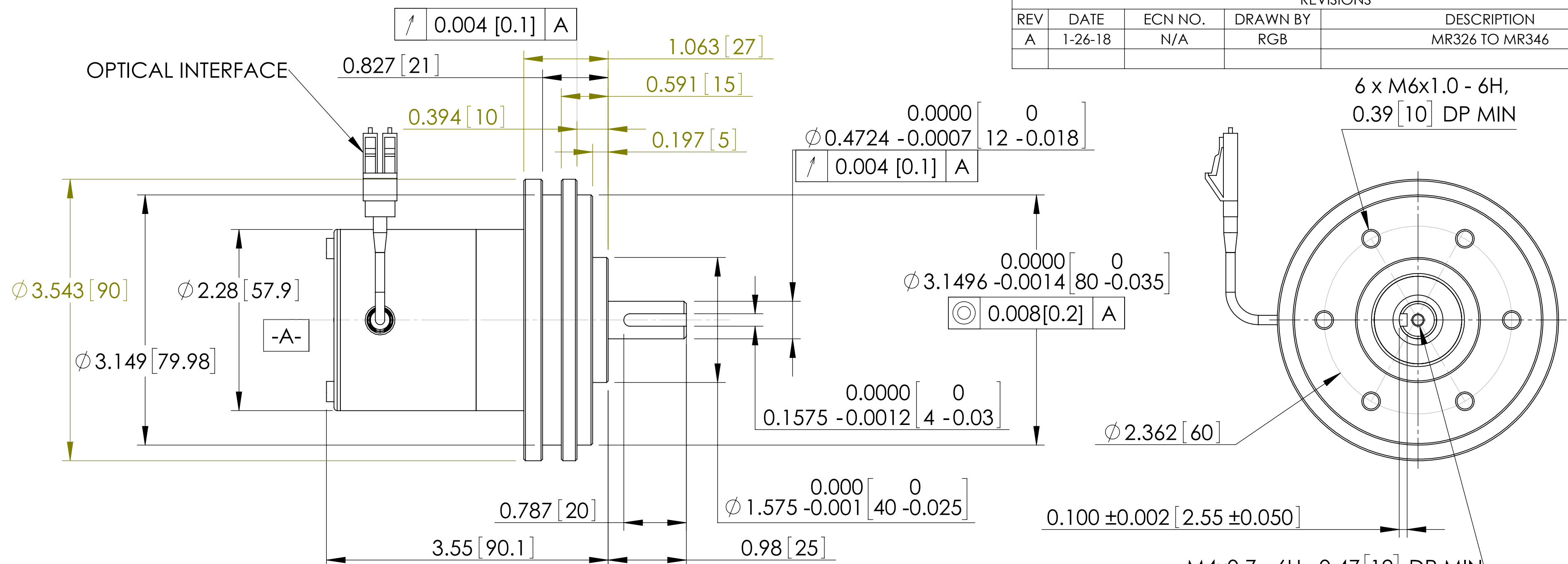
M4x0.7 - 6H, 0.47 [12] DP MIN,  
TAP DRILL 0.63 [16MM] DP MIN

6 x M6x1.0 - 6H,  
0.39 [10] DP MIN

UNLESS OTHERWISE SPECIFIED: DIMENSIONS ARE IN INCHES		 www.MICRONOR.COM 805 389 6600	
<b>TOLERANCES:</b> TWO DECIMAL PLACE: ±.01 THREE DECIMAL PLACE: ±.004 FOUR DECIMAL PLACE: ±.0010 ANGULAR: ±.5°			
MATERIAL: SEE NOTES		<b>TITLE:</b> MR346 ROTARY INCREMENTAL ENCODER ENVELOPE, IP-LC RECEPTACLE VERSION	
FINISH: SEE NOTES		<b>SIZE</b> DWG. NO. <b>C</b> 98-0340-57	<b>REV</b> <b>A</b>
DO NOT SCALE DRAWING		<b>SCALE:</b> 1:1	<b>SHEET:</b> 1 OF 2

**PROPRIETARY AND CONFIDENTIAL**  
 THE INFORMATION CONTAINED IN THIS DRAWING IS THE SOLE PROPERTY OF MICRONOR INC. ANY REPRODUCTION IN PART OR AS A WHOLE WITHOUT THE WRITTEN PERMISSION OF MICRONOR INC. IS PROHIBITED.

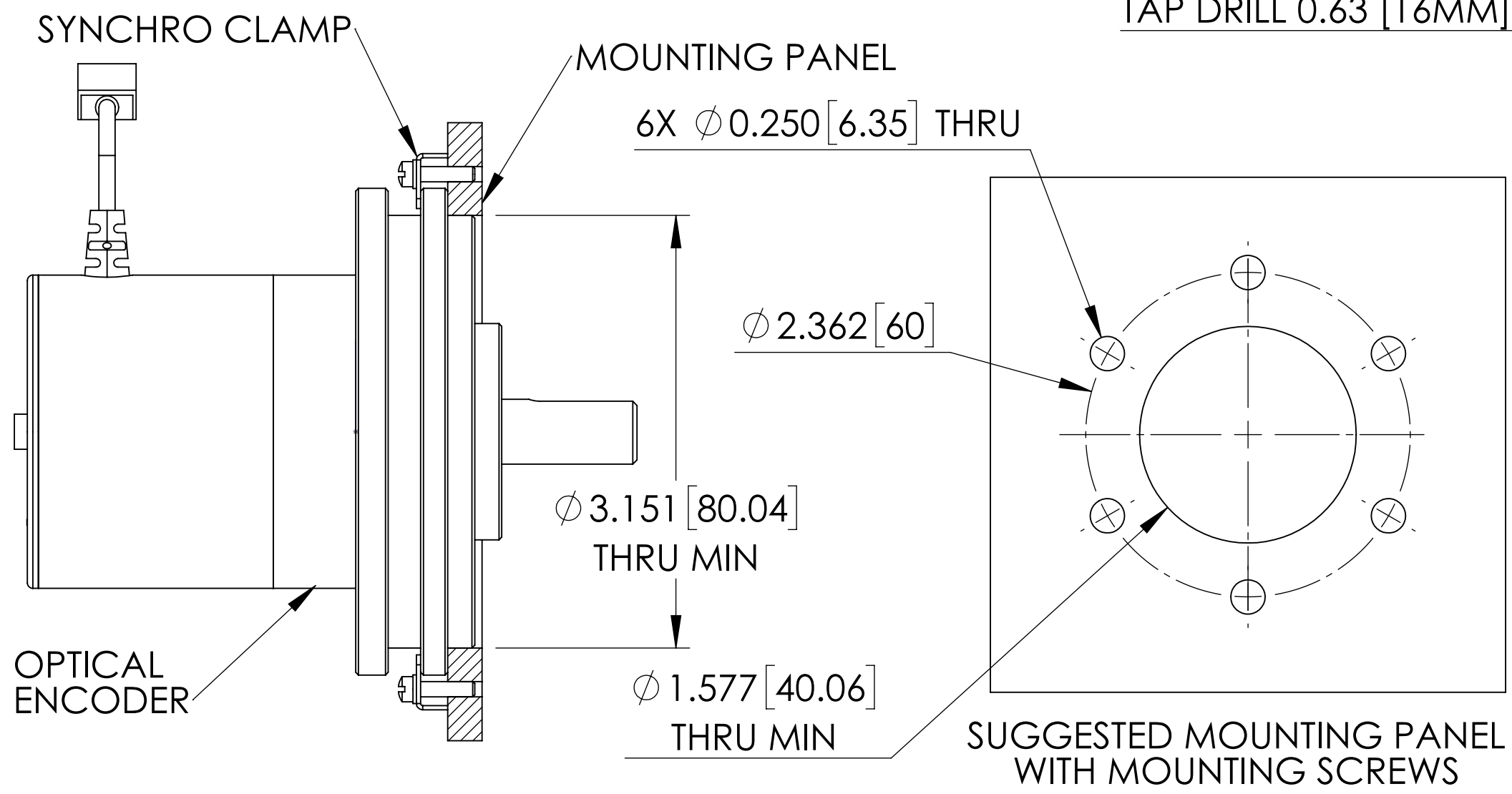
REVISIONS				
REV	DATE	ECN NO.	DRAWN BY	DESCRIPTION
A	1-26-18	N/A	RGB	MR326 TO MR346



**PART NUMBER ORDERING CODE**

MR346 - C 12 C 1R5

- RESOLUTION (PPR)**  
C = 256  
D = 360
- SHAFT SIZE IN MILLIMETERS**  
12 = 12MM SHAFT  
OTHER SHAFT OPTIONS ARE AVAILABLE
- CONNECTOR TYPE**  
C = DUPLEX LC
- PIGTAIL LENGTH IN METERS**  
(R = DECIMAL POINT)  
1R5 = 1.5 METER
- TEMPERATURE RANGE**  
(BLANK) = STANDARD: -40 °C TO +80 °C  
E = EXTENDED: -60 °C TO +125 °C




**SUGGESTED MOUNTING PANEL WITH SERVO CLAMPS**

- 3 **WARNING: KEEP CONNECTOR COVERS IN PLACE DURING STORAGE, TO PROTECT FIBER OPTIC INTERFACES.**
- 2 **WARNING: DO NOT DROP UNIT. DROPPING OR OTHER SEVERE SHOCK IMPACTS MAY DAMAGE UNIT.**
- 1 **ALWAYS USE FLEXIBLE COUPLING WHEN MOUNTING SHAFT TO EXTERNAL EQUIPMENT.**

NOTES: UNLESS OTHERWISE SPECIFIED

**PROPRIETARY AND CONFIDENTIAL**  
THE INFORMATION CONTAINED IN THIS DRAWING IS THE SOLE PROPERTY OF MICRONOR INC. ANY REPRODUCTION IN PART OR AS A WHOLE WITHOUT THE WRITTEN PERMISSION OF MICRONOR INC. IS PROHIBITED.

UNLESS OTHERWISE SPECIFIED: DIMENSIONS ARE IN INCHES		 <b>micronor</b> FIBER OPTIC KINETIC SENSORS		WWW.MICRONOR.COM 805 389 6600
TOLERANCES: TWO DECIMAL PLACE: ±.01 THREE DECIMAL PLACE: ±.004 FOUR DECIMAL PLACE: ±.0010 ANGULAR: ±.5°		TITLE: <b>MR346 ROTARY INCREMENTAL ENCODER ENVELOPE, DUPLEX LC PIGTAIL VERSION</b>		
MATERIAL: SEE NOTES	FINISH: SEE NOTES	SCALE: 1:1	SIZE DWG. NO. <b>C 98-0340-57</b>	REV <b>A</b>
DO NOT SCALE DRAWING		SHEET: 2 OF 2		