

MR398 Simplex and Duplex Fiber Optic Cable Assemblies For Use With Micronor MR330/MR340/MR380 Sensor Products

MR398 FO CABLES

Micronor's MR398 series fiber optic cable assemblies offer a turn-key solution for deploying Micronor sensor products in a broad range of environments. We offer cable options depending on the nature of the application:

- T1X series are simplex, jumper cables for use with multiple E-Stops and Microswitches topologies
- T2X series are low cost, commercial-grade zip-style jumper cables for benign environments and inside cabinets.
- H2X series are rugged, indoor/outdoor/MilTac grade cables for IP-LC links

The Polyurethane (PUR) jacketed H2X cable options offer exceptional abrasion, cut, chemical, and UV resistance. These cables can be deployed in traditional cable tracks and raceways but are rugged enough to be clamped directly to equipment surfaces and used outdoors. Each of Micronor's MR398 series fiber optic cable assemblies are crush resistant, flexible, resilient and offer exceptional mechanical protection for the internal fibers.



MR398-T1x/T2x
Commercial



MR398-H2x
Environmental



SENKO IP-LC Plus
Environmental Connector

Specifications

Fiber Characteristics			
Fiber Type	Multimode	Single Mode	
Core/Cladding/NA	62.5/125 μm, Graded Index, 0.275 NA, Type OM1	9 /125 μm, Type OS1	
Attenuation	3.5 dB/km at 850nm, 1.5 dB/km at 1310nm	1 dB/km at 1310nm	
Cable Attributes	MR398-T1x	MR398-T2x	MR398-H2x
Applications	Indoor	Indoor	Indoor/Outdoor/MilTac
Cable Diameter	Ø1.8 mm	2xØ1.8 mm, ZIP style	Ø6.5 mm
Jacket Material	PVC	PVC	UV-Resistant Polyurethane
Flame Retardance	OFNR Riser Rated	OFNR Riser Rated	None
Chemical Resistance	Minimum Chemical Resistance	Minimum Chemical Resistant	Petrochemical & Severe Chemical Resistant
Max. Tensile Load	Installation: 100 N Operation: 50 N	Installation: 100 N Operation: 50 N	Installation: 2200 N Operation: 550 N
Min. Bend Radius	Installation: 5.0 cm Operation: 3.0 cm	Installation: 5.0 cm Operation: 3.0 cm	Installation: 10.4cm Operation: 5.2 cm
Cable Weight	5.0 kg/km	10.0 kg/km	31.0 kg/km
Environmental			
Cable Only	-20°C to +70°C	-20°C to +70°C	-55°C to +85°C
Cable Assembly	-20°C to +70°C	-20°C to +70°C	-40°C to +70°C

Ordering Info Simplex/Duplex-LC Cable Assembly

MR398 - T26 - CC 003

Fiber/Cable

- T16** Simplex Commercial Grade
62.5/125 MMF, OM1 Cable
- T19** Simplex Commercial Grade
9/125 SMF, OS1 Fiber
- T26** Duplex Commercial Grade
62.5/125 MMF, OM1 ZIP Cable
- T29** Duplex Commercial Grade
9/125 SMF, OS1 ZIP Cable

Connector

- CC** Duplex-LC to Duplex-LC
- FF** (Simplex LC to Simplex LC, for T1x Cable)

Note: Simplex- or Duplex-LC connectors are not Environmentally Rated connectors. IP-LC connections are recommended where ingress protection is required

Length

- 001** 1m
- 003** 3m
- 005** 5m
- 010** 10m
- 050** 50m
- 100** 100m

NOTE: Custom lengths on request

Standard Jumper Cables

Short Jumpers

- MR398-T16-FF0R5** Simplex-LC to Simplex-LC, OM1, 0.5m
- MR398-T26-CC0R5** Duplex-LC-to Duplex-LC, OM1, 0.5m

Regular Jumpers

- MR398-T26-CC001** Duplex-LC to Duplex-LC, OM1, 1m
- MR398-T26-CC003** Duplex-LC to Duplex-LC, OM1, 3m
- MR398-T26-CC005** Duplex-LC to Duplex-LC, OM1, 5m
- MR398-T26-CC010** Duplex-LC to Duplex-LC, OM1, 10m

Ordering Info Harsh Environment IP-LC Duplex Cable Assembly

MR398 - H26 - CD 003

Fiber/Cable

- H26** Harsh Environment Mil/Tac Grade
62.5/125 MMF, OM1 Duplex Cable
- H29** Harsh Environment Mil/Tac Grade
9/125 SMF, OS1 Duplex Cable

Connector

- CD** Duplex-LC to IP-LC Plug
- DD** IP-LC Plug to IP-LC Plug

Length

- 001** 1m
- 003** 3m
- 005** 5m
- 010** 10m
- 050** 50m
- 100** 100m

NOTE: Custom lengths on request

Standard Jumper Cables

- MR398-H26-CD003** IP-LC to Duplex-LC, OM1, 3m
- MR398-H26-CD003** IP-LC to Duplex-LC, OS1, 3m

Ordering Info Interconnection Accessories

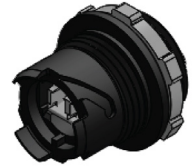
MR320C

Duplex LC to Duplex LC Bulkhead Receptacle



MR320D

IP-LC to Duplex-LC Bulkhead Receptacle; includes gasket, nut and dust cap on leash.



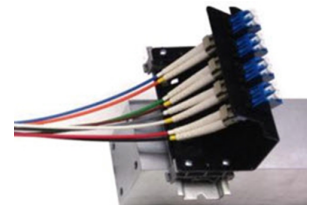
MR320D-INLINE

IP-LC to IP-LC Inline Bulkhead Receptacle; includes gasket, nut and dust cap on leash.



MR398-DIN4-CC DIN Rail Mount Patch Panel

For up to 4 Duplex-LC connections, such as Multifiber Trunk Cable to Multiple Controllers



MR398-JBCC-XX Junction Boxes

Where XX=CC=Duplex-LC to Duplex-LC, CD=Duplex-LC to IP-LC, DD=IP-LC tyo IP-LC MR398-DIN4-CC



MICRONOR SENSORS, INC.
2085 Sperry Ave, Suite A-1, Ventura, CA 93003 USA
+1 805 389 6600 sales@micronor.com
www.micronor.com