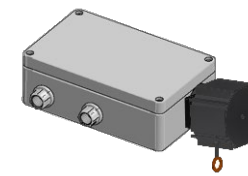
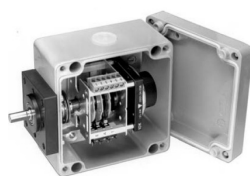
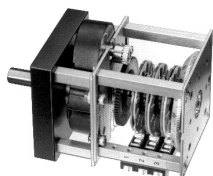
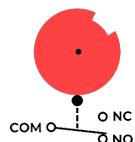



MICRONOR® AG ROTARY-LINEAR LIMIT SWITCHES

GP=General Purpose, IP64
HD=Heavy Duty, IP66



PRODUCT MODEL	KW60 Open Frame	KWG120 GP, Single Shaft	MR221 HD, Single Shaft	MR222 HD, Dual Ended Shaft	KWG120W GP, DrawWire/Linear	MR221W HD, Draw Wire/Linear
Applications	For position feedback or safety limits on machinery where movement based on rotation angle or no. of shaft revolutions. Examples: crane, winch, drum hoist, door, conveyor, dam gates, locks, flood control gate, water intake gate, lift bridge, bascule bridge, swing bridge.				For position feedback or safety limits, on machinery where movement based on linear motion. Examples: lift platform, elevator, dam gate, hydraulic cylinder.	
No. of Cam Switch Channels	1-10	KWG120: 1-5 KWG160: 6-10	2-8	2-8	KWG120W: 1-5 KWG160W: 6-10	2-8
Switch rating (resistive continuous spec shown)	KS25B4, VDE rated, 4A 240VAC, 1A 60VDC Option: S840	KS25B4, VDE rated, 4A 240VAC, 1A 60VDC Option: S840	S840, UL rated, 6A 240VAC, 6A 24VDC Option: MT, 125VDC/10A	S840, UL rated, 6A 240VAC, 6A 24VDC Option: MT, 125VDC/10A	KS25B4, VDE rated, 4A 240VAC, 1A 60VDC	S840, UL rated, 6A 240VAC, 6A 24VDC
Cam option	 Standard: NK4201.180, User Programmable Double Cams Options: NK4101.20 Adjustable Single Cams PSN Cam Programming Tool Stored Internally (except KW60)					
Gear Ratio options	Gear ratio options apply to Rotary Limit Switches ONLY. Draw Wire/Linear Limit Switches are internally geared per Travel Length. Step UP (D1:x): D2 (1:2, usually for travel less than 180 degrees). Step DOWN (Single Stage Gearing Ux:1): U1 (direct drive), U1.25, U2.0, U2.6, U2.75, U3.5, U4.0, U5.0 Step DOWN (Multi-stage Gearing Mx:1): M12.5, M20, M25, M30, M37.5, M40, M50, M52.5, M75, M100, M200, M300, M420, M600, M750, M1600, M2250, M2500					n/a
Draw Wire Travel options	n/a	n/a	n/a	n/a	1.5m, 3m, 5m, 7.5m, 10m, 15m, 30m, 40m, 50m	1.5m, 3m, 5m, 7.5m, 10m, 15m, 30m, 40m, 50m
4-20mA Position Feedback Output options	n/a	-1 Transducer-Based	-1 Transducer-Based -E Encoder-Based	-1 Transducer-Based -E Encoder-Based	-1 Transducer-Based	-1 Transducer-Based -E Encoder-Based
Housing /IP standard and option	n/a	Standard= Proprietary copper free aluminum alloy (corrosion resistance similar to SS) die cast housing with powder coat (NEMA 4/4X) Special Option= Stainless steel (NEMA 4/4X), not available for KW, KWG and Draw Wire models				
Operating Temperature	-40°C to +85°C	-40°C to +85°C	-40°C to +85°C	-40°C to +85°C	-20°C to +60°C	-20°C to +60°C

© 2023-2025, MICRONOR SENSORS INC., MICRONOR® is a registered trademark of MICRONOR AG
ALL SPECIFICATIONS ARE SUBJECT TO CHANGE WITHOUT PRIOR NOTIFICATION.

98-0221-06-B
[QR Code to Limit Switches](#)

micronor
sensors

MICRONOR SENSORS, INC.
www.micronor.com

2085 SPERRY AVE, STE A-1
VENTURA, CA 93003 USA

+1-805-389-6600
sales@micronor.com

